



## Skerry Rise

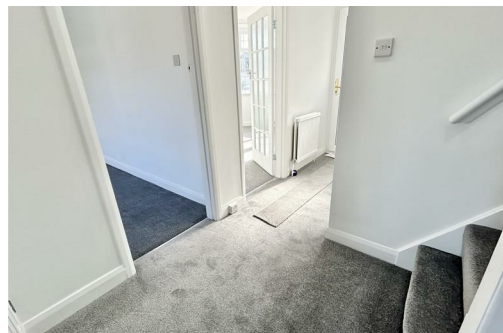
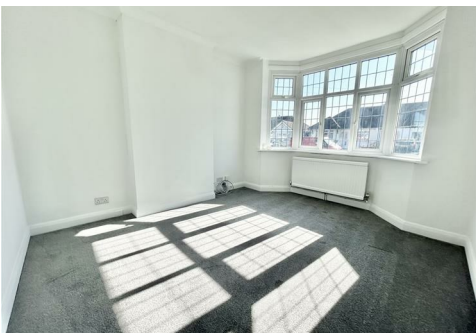
Chelmsford, CM1 4EG

**Guide Price £395,000**



Freehold  
Tax Band:

An EXTENDED semi detached chalet bungalow - REDECORATED THROUGHOUT with a RECENTLY RE-FITTED KITCHEN, newly carpeted and TWO/THREE DOUBLE BEDROOMS. With an entrance hall, DINING ROOM / STUDY (or third bedroom), BAY-FRONTED LOUNGE, refitted shower room, lean-to/utility area to rear, SPACIOUS FIRST-FLOOR BEDROOM plus a walk-in wardrobe / STUDY AREA with potential to create an en suite (stpp). Externally offering parking for 2-3 CARS, a DETACHED GARAGE and a GENEROUS REAR GARDEN. Contact Hamilton Piers of Chelmsford to view!



# Skerry Rise, Chelmsford, CM1 4EG

The accommodation, with approximate room sizes, is as follows:

## GROUND FLOOR ACCOMMODATION:-

### ENTRANCE HALL:

Part glazed uPVC entrance door, stairs to first floor, storage cupboard, radiator, newly carpeted, doors to:

### LOUNGE: (11' x 10'11")

Double glazed bay window to front aspect, radiator, newly carpeted.

### BEDROOM THREE / DINING ROOM / STUDY:: (10'2" x 8'6")

Double glazed window to front aspect, cupboard housing hot water cylinder, radiator, newly carpeted.

### BEDROOM TWO: (11'11" x 11')

Double glazed window to rear aspect, radiator. \*Could be used as Master Bedroom if a ground floor main bedroom is required.

### KITCHEN: (9'10" x 6'9")

Two double glazed windows to rear aspect, Howdens fitted kitchen with matching cream gloss wall and base units, newly fitted worktops with new stainless steel sink and mixer tap, brand new oven and hob, stainless steel extractor hood over, space for washing machine and fridge/freezer, wood effect flooring, door to:

### LEAN-TO / UTILITY AREA:

Brick built with polycarbonate roof, windows to side and rear aspects, space for tumble dryer or other domestic appliances, Door to rear garden.

### SHOWER ROOM:

Opaque double glazed window to rear aspect, fully tiled corner shower unit, low level WC, pedestal wash hand basin, radiator, \*Previously housed a bath tub - could be reinstated if required.

## FIRST FLOOR ACCOMMODATION:-

### LANDING:

Built in storage cupboards, doors to:

### STUDY AREA / WALK-IN WARDROBE:

Excellent for either extra storage, as a walk-in wardrobe or dressing area, or possibly as a study area. Potential to convert into an En Suite, stpp.

### BEDROOM ONE: (12'11" > 10'4" x 12')

Double glazed window to rear aspect, radiator, newly carpeted.

## EXTERIOR:-

### FRONT:

Brick paved driveway with parking for 1-2 cars to front, driveway to side accessing Detached Garage and further parking space.

### REAR GARDEN:

Fenced rear garden with hard standing to immediate rear, remainder mainly laid to lawn with shrubs to borders. Access to garage.

### GARAGE, DRIVEWAY AND PARKING:

Shared driveway along the side of property leading to detached single garage (set back behind property) fitted with up and over door, additional parking space in front of garage for smaller car.

## AGENTS NOTES:

For further information please contact Hamilton Piers. In accordance with the Estate Agents Act 1979 we are obliged to state that the owner of this home is a relative or staff member of Hamilton Piers or it's subsidiaries.



At Hamilton Piers we aim to ensure our particulars are accurate and reliable. However, they do not constitute any offer or contract, nor are they to be taken as statements or representations of fact. No tests have been carried out by us in respect of services, systems or appliances contained in the specification and no guarantee as to their operating ability or efficiency is given (unless stated otherwise).

All measurements are a guide only and, therefore, can be approximated in some cases. If purchasing, fixtures and fittings, apart from those mentioned in the particulars, are to be agreed with the seller. Some particulars, please note, may also be awaiting the seller's approval. If clarification or further information is required, please contact us.

AWARD WINNING SALES AND LETTINGS ACROSS ESSEX

01376 341 141 | 01245 269 777 | 01621 212 450 | 01371 809 500 | 0207 079 1510

